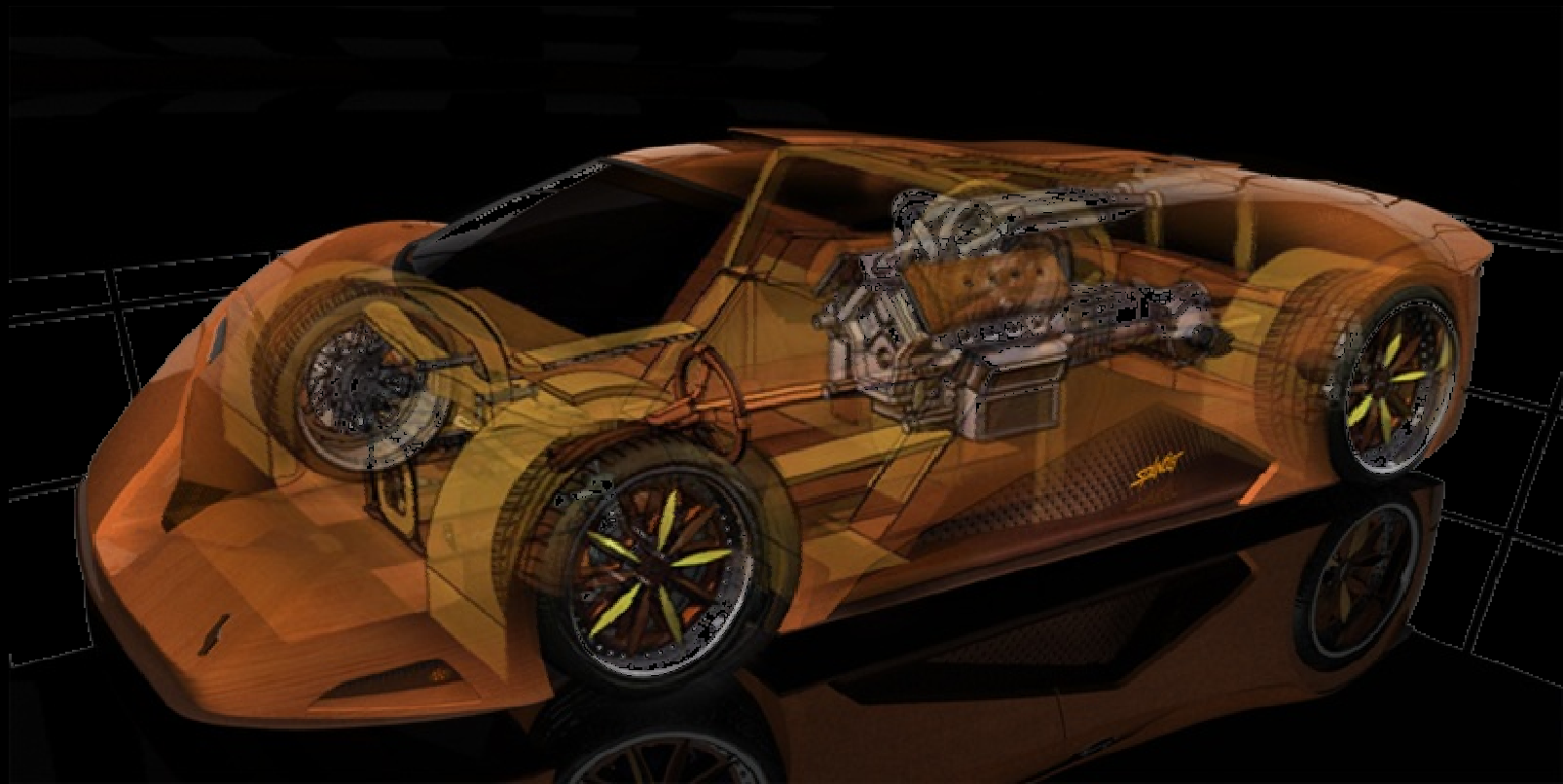


April 2011 Edition

DAuto News Letter



Design engineers turn designs into reality. Without them, a great idea but nothing more than, well, a great idea.

The Future of In-Car Technology

Your dashboard may soon become as versatile as your laptop

Compared with the electronic wizardry found in our homes and offices, even the most advanced cars built today seem stuck in the Stone Age. Spending time in the car means abandoning modern advances like Wi-Fi and iTunes for comparatively ancient technologies like satellite radio, in-dash CD players, and tiny nav screens suction-cupped to the windshield. It won't stay that way. In the very near future, your dashboard may soon become as versatile as your laptop. Ford's Sync, an option starting at \$395, is an already available, multifaceted platform made by Ford and Microsoft. And Kia is currently rolling out a similar, Microsoft-developed system in the 2011 Sorento and Sportage called Uvo. The next iteration of Sync grows into an integrated media hub called MyFord Touch, while in-car Wi-Fi lets drivers take the Internet along with them. In the future, cars may not only entertain us but could improve driver awareness and reduce distractions, and the advent of electric vehicles will forever change how automobiles connect with infrastructure.



The Future of In-Car Technology- Features



2012 Audi TT RS

We invite you to consider the following postulate: the Audi TT RS is a backwards Porsche 911 Turbo. We submit the following evidence: Each one comes with all-wheel drive and turbocharging, both offer two-plus-two seating, and in the case of our Euro-spec TT RS, both can be had with seven-speed dual-clutch gearboxes with launch control. Launch control is largely responsible for the 911 Turbo's and the TT RS's stupefying, almost unbelievable 0-to-60 times



None of the U.S. cars will have the dual-clutch transmission. Because of the tiny volume being imported, Audi's American arm had to choose only one transmission: either a six-speed manual or the seven-speed dual-clutch. They went with the manual, which doesn't have launch control. But, TT RS will have 25 more horsepower than the base European version, for a total of 360. (Europe is likely to get an option package that will boost its car to horsepower total.) We anticipate that the extra horses won't make up for the launch control's advantage, and predict a 0-to-60 time of 4.5 seconds with the manual.

2012 Audi TT RS- Technical Specification

VEHICLE TYPE: front-engine, 4-wheel-drive, 4-passenger hatchback

ENGINE TYPE: turbocharged and intercooled DOHC 20-valve inline-5, iron block and aluminum head, direct fuel injection

DISPLACEMENT: 151 cu in, 2480 cc

Power (SAE net): 335 hp @ 6500 rpm

Torque (SAE net): 332 lb-ft @ 1600 rpm

TRANSMISSION: 7-speed dual-clutch automatic

DIMENSIONS:

Wheelbase: 97.2 in Length: 165.3 in

Width: 72.5 in Height: 52.8 in

Curb weight: 3320 lb

C/D TEST RESULTS:

Zero to 60 mph: 3.6 sec

Zero to 100 mph: 9.3 sec

Zero to 130 mph: 17.0 sec

Street start, 5–60 mph: 5.2 sec

Standing ¼-mile: 12.1 sec @ 113 mph

Top speed (governor limited): 155 mph

Braking, 70–0 mph: 161 ft

Roadholding, 300-ft-dia skidpad: 0.95 g



Types of Cars

Different Types of Cars

Cars can be broadly categorized into various types on the basis of their shape, size, mechanical specifications, performance, etc. Here is a list of the most popular types of cars that are seen on the streets these days

Convertibles:

These small cars with a sporty look, typically feature a roof which can be either folded or detached. Although most convertibles are two seaters and/or two door, four seaters and/or four door convertibles are also available. At times, detaching the roof can be a tedious task, and buying power assisted convertibles can save you the trouble involved in it. Some of the famous convertibles in market today include the Ford Mustang, Dodge Avenger and Pontiac Sunfire.

Coupes:

These are small two door cars, sporting a roof that is inclined towards the rear. These are shortened versions of sedans, and you can experience the issue of cramping in coupes, especially when you try to get into the back seat. Some of the famous coupe models in market today include the Bentley Continental GT Coupé and Aston Martin DBS.

Types of Cars

Hatchbacks:

The USP of hatchbacks is the ample cargo space and a large door to tuck in all your luggage. The cargo space of these medium sized cars is accessible from the rear seat, as opposed to the separate trunk in sedans. Some of the most popular hatchback models include Audi S3, Geo Metro and Dodge Caliber

Sedans:

These cars range from mid-sized to large models, and typically feature two rows of seats. Being considerably large, they provide ample space for people who occupy the rear seat as well. These family cars, especially the large sedans, have a powerful engine and plush, spacious car interiors. Even though parking can be troublesome owing to their relatively large size, the size does enhance the safety features of these vehicles. The latest inclusion to this car type, luxury sedans have redefined the term luxurious ride to a great extent. Toyota Camry and Ford Taurus are popular medium sized sedans, while Ford Crown Victoria and Buick LeSabre are popular large sedans available in the market.

Minivans:

These mid-sized cars provide ample space for passengers, as well as cargo transportation. There is a large variety when it comes to minivans. Some of these multi-utility vehicles (MUVs) are four wheel drive, while some offer seats which can be folded as to convert the passenger car to a utility vehicle. The popular minivan models available today include Dodge Grand Caravan, Volkswagen Routan and Kia Carnival.

Types of Cars

Sports Cars:

These are power packed two seater cars, which are designed to derive the maximum fun of a speedy ride. Their prominent features include a muscular engine and sleek looks, based on the laws of aerodynamics. They may seem to be a bit expensive, but these cars are meant for people who don't like to compromise with power and looks. Read more on sports cars.

Sport-utility Vehicles (SUV):

These cars are designed for regular roads as well as off-road terrain. In some countries, they are also referred to as the off road vehicles or 4x4. The prominent features of SUVs include exceptional ground clearance, four-wheel drive and rugged styling. Though versatile, these cars can cost a fortune to own and maintain. Popular SUV models include BMW X-5, the Lexus RX 300 and Toyota Land Cruiser.

Station Wagons:

These four door passenger cars feature a relatively long roof and an ample cargo area in the rear. Though their cargo space is quite less when compared with minivans, one can't ignore the fact that its passenger space is at par with sedans. The four-door vehicle also features a tailgate opening, which ensures easy loading and unloading of cargo.

Types of Cars



Convertible



Coupe



Hatchback



Sedan



Minivan



Sports Car



Station Wagon



Sport-utility Vehicle (SUV)



This contrive has been prepared and envisioned by one of the Dauto CAD School student during the period of Software Training on CATIA V5.

Good News :
(OPENING AT DAuto)
DAuto Company has openings for the
post of design Engineer, preference would
be made for DAuto
CAD School Students, Eligible candidates
may send
their Curriculum Vitae at :
careers@dauto.co.in

(LIVE PROJECTS WITH STIPEND)
DAuto initiated to provide live projects
with stipend, it will helpful for students
In their hand's on experience and future
building
As well.
For More Info : 9752006008/
9981500100



Design by Mr. Anil Suryawanshi on
CATIA V5.

Thank You !!