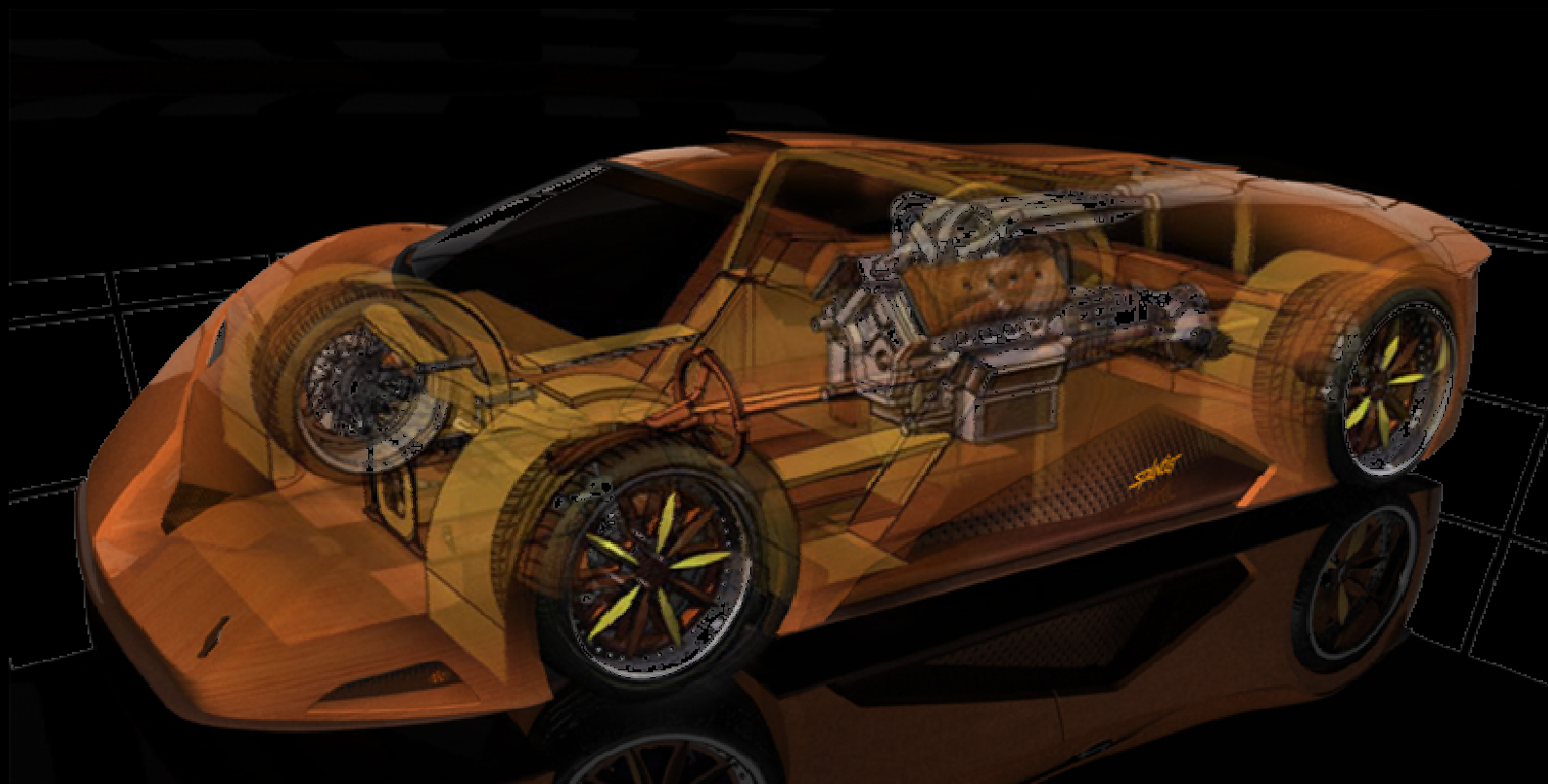


DAuto News Letter



Design engineers turn designs into reality. Without them, a great idea but nothing more than, well, a great idea.



New BMW Z4 Accelerating design revolution

BMW Z4 new model is the successor to both the BMW Z4 Roadster and BMW Z4 coupe. Two-piece electro hydraulically retractable hardtop in lightweight aluminum shell construction. The hardtop opens and closes fully automatically in each case 20 seconds, the roof elements coming to rest in the roof compartment to give the car a low -slung rear-end design reflecting the traditional proportions of a roadstar as well as large windows .

Head and elbow room as well as the degree of comfort in entering the car have been significantly enhanced over the former model .the low seating position near the rear axle guarantees the driving experience typical of a BMW Roadster. High- quality materials, first class quality of finish and driver-Oriented design of both the instrument panel and the center Console guarantee an emotional driving experience in a particularly refined ambience. Wide range of storage options within the passenger compartment including a spacious crosswise storage compartment behind the seats.



Dimension Automotive Technology

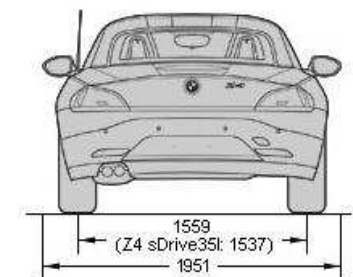
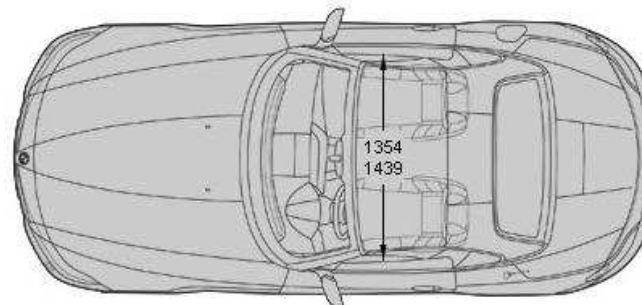
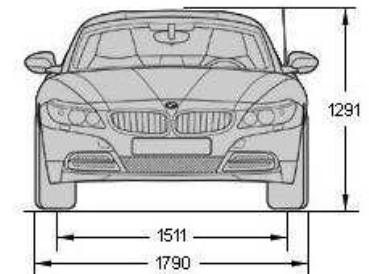
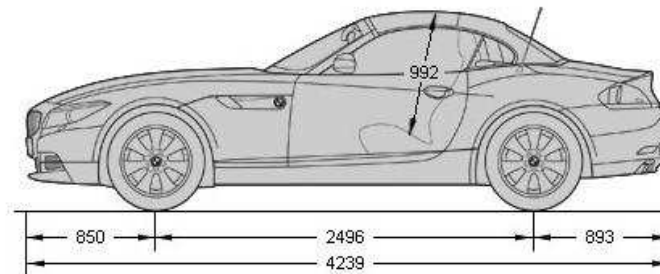


A roadster designed the way only BMW can :the classic Proportions of the stretched bonnet and short overhangs are Complimented by the low seats near to the rear axle to Grant the driver a perfect feel for the road. the modern Shape, an interplay of striking contours and soft mergers Fully captures the character of the vehicle from its character- Ristic kidney grille to the powerful wheelarches at the rear

Permitted load- 330
Co2 emission(g/km)-199
Tank capacity in l(approx)-55
Cylinder/valves - 6/4

Technical specifications

Engine	-	Turbocharged 2979cc
Fuel economy	-	8km/l
Top speed	-	250km/h
Power	-	300hp@500RPM
Torque	-	300@1400RPM
Gross Weight	-	1564kg



Audi A8 (2011)



Valve Train—16valveDOHC
Fuel supply system—Common-Rail type
Transmission—5speed Manual
Max torque—445Nm@ 3500 rpm

New Audi A8

Made from lightweight aluminum, the exterior design of the new car features progressive design elements including a coupé-like roofline and the brand's now characteristic 'tornado' line which separates the DLO from the dynamic, sculptured surfaces - while its single-frame grille has been given a sculptured, three-dimensional look which emphasizes the car's width. Measuring 5137mm in length, 1949mm in width and 1460mm in height.



Dimension Automotive Technology

Engines

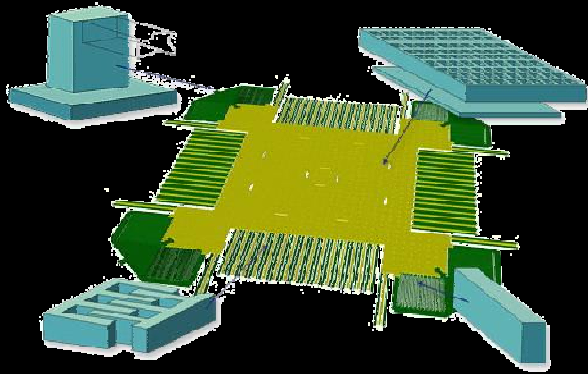
Superior power and high efficiency - the new Audi A8 makes its debut on the market with a strong V8 engine. With 372 hp, they never fail to impress with their superior power and mighty but discreet propulsion. All engines feature direct fuel injection, and consume 15 percent less fuel than their respective predecessors. The engine in the A8 has intelligent elements from Audi's modular efficiency system on board. During deceleration the recuperation system converts the kinetic energy to electric power, which is buffered in the battery. In the innovative thermal management a computer monitors numerous actuators for the ideal distribution of the heat flows between the engine, transmission and interior in any situation. After the cold start the engine is temporarily fully uncoupled from the cooling circuit, considerably shortening the warm-up phase with its high loss of friction.



Audi side assist: safety when changing lanes

At speeds of 30 km/h (18.64 mph) and above, Audi side assist operates with two radar sensors in the rear that observe events occurring behind the car. Should another vehicle be moving in the critical area, the yellow LED indicator in the housing of the outside mirror first lights up. If the driver nevertheless activates the turn signal to change lanes, the indicator becomes brighter and begins to blink quickly - a signal that can hardly be overlooked.

Dimension Automotive Technology



Model library

Maxwell Technologies ultra capacitor components library is available for use in Ansys Simplorer software with this model library, automotive and aerospace engineers developing hybrid vehicles and other electric-powered products and systems can use the energy-storage device models in their simulations.

Technology convention-2009



Actuator lens options

Providing ergonomic and performance-enhancing solutions for new existing panels for most industrial environments, EAO Switch offers a line of options for the series 61 actuators. Flush-mounting actuators are available in standard mounting size and can now be fitted with different illuminated lenses to create a halo-style glow, laser-engraved symbol, or central dot. These illuminated symbols enhance the aesthetic design of a control panel and improve industrial ergonomics.



CTS-V exhaust systems

Corsa performance Exhaust has designed an exhaust system complementary to the exterior styling of the 2009 Cadillac CTC-V. It features a dual rear exit with single finned re, more4-in pro-series tips etched with the corsa logo. There are two versions of the system: touring and sport. The touring exhaust system delivers a deeper muscle-car sound.



DAuto CAD School is a training division of Dimension Automotive Technology .

Students are creating design of products where they are getting best compliments on their designs.

One of the student of our training cell has created the design of 3-D Technical features with all technical aspects.

This image is the output of student design.



Thank You ! !